

# HOLDEN



OPTIONAL EQUIPMENT SHOWN



## Fixed Neck Lowboy

## 40-50 Ton

**Our Goal** at Holden Industries is ... To build a trailer you can be proud of for many years to come.

**Our Manufacturing Policy** is ... To provide the best trailer money can buy for your dollars invested.

*"Don't be Confused by Look Alikes  
— Buy the Best."*

*"Custom Trailers — Tailored to Your Needs"  
Since 1969*

Holden Industries incorporated in Missouri in 1969, separating from its parent company which dated to the early 1950's. Holden Industries presently builds both commercial and government trailers at two factories in Southwest Missouri. The commercial line includes over 40 standard models plus many custom-designed units. Government models have fulfilled needs of all branches of U.S. Military, as well as NASA, TVA and other domestic and foreign government and quasi-government concerns.



**HOLDEN INDUSTRIES, INC.**

ROUTE 1, BOX 151  
SOUTHWEST CITY, MISSOURI 64863

**800-488-4487**

### DEALER INFORMATION

# HOLDEN TRAILERS

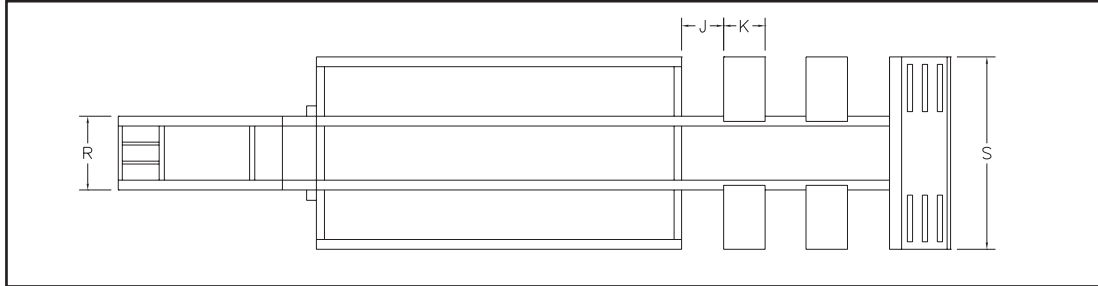
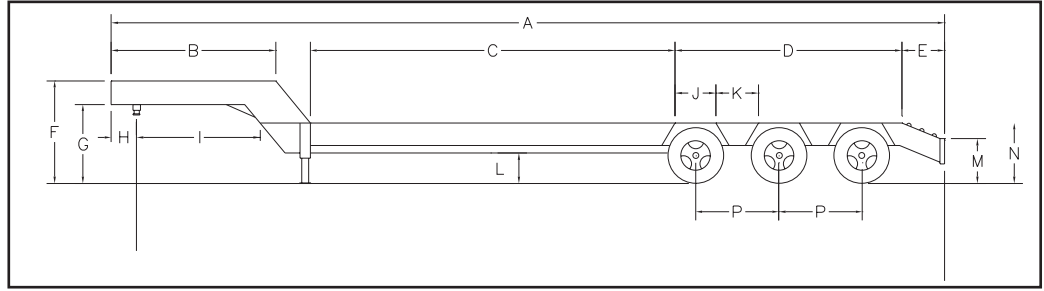
**"Built as Tough as the Load They Haul"**

# 40-50 TON

**INQUIRE FOR  
OTHER SIZES**

**"DIMENSIONS AND WEIGHTS  
FOR REFERENCE ONLY"**

# ***SPECIFICATIONS***



### FIXED NECK

40 TON MODEL	50 TON MODEL
A	44'3"
B	9'5"
C	20'
D	11'6½"
E	25"
F	61"
G	49"
H	18"
I	87"
J	24"
K	25"
L	17"
M	27"
N	35"
*P	49½"
R	49"
S	102"

\* air ride suspension includes 54" axle spacings

### 40 Ton FIXED NECK Tandem Axles HLB40

#### 40 TON STANDARD SPECIFICATIONS CONSTRUCTION

- 18" Wide flange main rails
- 12" Outer rails
- 20' Platform ahead of axle openings
- Hardwood floor, bolted
- 24" Beavertail with traction bars
- 12" Reinforced rear bumper
- Wide bolster in axle area
- 7 pr. Lashing rings per side
- Tool tray in rear of gooseneck
- Telescopic parking stands

#### RUNNING GEAR:

- 22,500# Axles with 12¼" x 7½" air brakes
- Heavy duty 3-leaf spring suspension
- 10-stud hub and drum
- 215/75R x 17.5 LR H tires on 6.75x17.5 budd wheels

#### ELECTRICAL SYSTEM:

- 7-Way electrical connector
- Moisture-proof wiring system
- Circuit breaker-protected lighting system
- Lights and wiring to DOT specifications

### 50 Ton FIXED NECK Tandem Axles HLB40

#### 50 TON STANDARD SPECIFICATIONS CONSTRUCTION

- 21" Wide flange main rails
- 15" Outer rails
- 22' Platform ahead of axle openings
- Hardwood floor, bolted
- 24" Beavertail with traction bars
- 12" Reinforced rear bumper
- Wide bolster in axle area
- 8 Lashing rings per side
- Tool tray in rear of gooseneck
- Telescopic parking stands

#### RUNNING GEAR:

- 22,500# Axles with 16½" x 7" air brakes
- Heavy duty 8-leaf spring suspension
- 10-stud hub piloted w/outboard drums
- 255/70R x 22.5 LR H tires on 8.25x22.5 wheels

#### ELECTRICAL SYSTEM:

- 7-Way electrical connector
- Moisture-proof wiring system
- Circuit breaker-protected lighting system
- Lights and wiring to DOT specifications

## ***ASK ABOUT OTHER MODELS, LENGTHS OR DESIGNS***

Note: Due to innovative company policy, specifications, designs, material subject to change without notice or obligations.

### STANDARD OPTIONS

Various lengths and widths  
Additional lashing rings

Various suspensions  
Double-drop design

Swing-out widening brackets  
\*Wheel Covers

\*shown in picture

\*Full upper deck

\*2 Speed landing gear

\*Loading and motorgrader ramps



**HOLDEN INDUSTRIES, INC.**

ROUTE 1, BOX 151  
SOUTHWEST CITY, MISSOURI 64863